



BILLINGS, MT

PARADE of HOMES | 2025



2024 People's Choice
BRS Construction

Photo by Robb Vann
Van Leggalo Photography

SEPTEMBER 20-21 & 27-28, SATURDAY 10 AM - 5 PM SUNDAY NOON - 5 PM



**COLDWELL
BANKER**

THE BROKERS



Stockman Bank

Member FDIC



TDSFIBER.COM

GRAND
PRIZE

*A Family Outdoor
Recreation Package!*

SPONSORED
BY:



Scan Me

WE *Power* LIFE



VISIT WWW.YVEC.COM FOR MEMBER REBATES AND MORE

Guiding You
home.

406.652.6100



COLDWELL BANKER
THE BROKERS

Give Us a Call Today!



**Are Your Heating & Cooling Costs
Getting the Better of You?**

**A properly insulated
home or office can save you a bundle
on your heating & cooling costs!
We offer professional insulation
installation, or materials and
supplies for the DIY Customer.**



**CALL FOR
YOUR FREE
ESTIMATE
TODAY!**

256-1952

We promise to return calls promptly

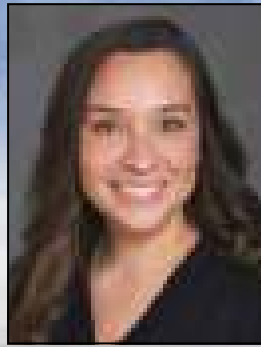


- Sprayed Urethane Foam
- Blow-in Fiberglass
- Fiberglass Batting
- Professional Installation

We Guarantee Your Satisfaction!



STEVE TUCKER
GRAND AVENUE
406-371-8101



APRIL MALACAS
DOWNTOWN
406-896-4802



TAMI HARTMANN
DOWNTOWN
406-896-4812



KEN BOESCHEN
SHILOH & GRAND
406-655-3997



TERESA GILREATH
HILLTOP & MAIN
406-896-4810



STEPHANIE DOUGLAS
KING AVENUE
406-655-2702

MONTANA HOME LOAN EXPERTS

Buying, building or refinancing your Montana home? Our experienced Real Estate team can find the solution that best fits your needs. Local knowledge and expertise. Discover the difference.



S Stockman Bank
Montana's Brand of Banking



TABLE OF CONTENTS

NEWS YOU CAN USE

Celebrating the Rich Tradition of Log Homes 12
 Understanding Factors in Energy-Efficient Homes 20
 Money Matters First-Time Homebuyer Basics . . . 24
 Top 10 Interior Design Do's and Don'ts 28
 Top Signs Your Home Has a Water Problem 33
 Emergency Preparedness Begins at Home. 36
 Is Remodeling Right for You 37
 Beautiful and Bountiful—Raised Beds 40
 Stylish Storage Solutions for Your Home 42
 New Home Features 50
 Time for a New Kitchen. 54
 5 Specialty Rooms Home Buyers Want 62

BEST OF THE HBA









From the President 8
 From the Executive Director. 8
 Ban Construction 10
 Grand Prize Information 12
 Branding Iron Construction 14
 Board of Directors 16
 CB Built 18
 Gold Buckle Homes. 22
 McCall Homes. 26
 Pine Ridge Builders 30
 Home Locator Map 34
 True North Homes 38
 Wells Built Homes 44
 Thank You to our Sponsors! 46
 DB Carpentry—RED LODGE. 48
 Trailhead Builders—RED LODGE. 52
 Join us at the Building & Remodeling Expo. 55
 Zach Besel Construction—RED LODGE 56
 Index to Advertisers. 60

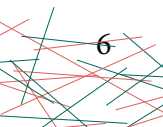


1645 Avenue D, Suite F • Billings, MT 59102
 406.252.7533 • www.hbabillings.net

Catalog Design: Barbara Scheppele, Cooper Creative
 Home Photos: VanLeggalo Photography by Robb Vann

"Billings Parade of Homes" is a registered trademark of the Home Builders Association of Billings. The 2025 Billings Parade of Homes magazine is produced by the Home Builders Association of Billings, MT, Inc. Every effort has been made to assure accuracy of information, but authenticity cannot be guaranteed. The Home Builders Association of Billings, MT, Inc. neither endorses or accepts responsibility for any statements or claims made by advertisers, neither is it responsible for any errors or omissions. NO part of this publication may be reproduced without the written consent of the Home Builders Association of Billings, MT, Inc.

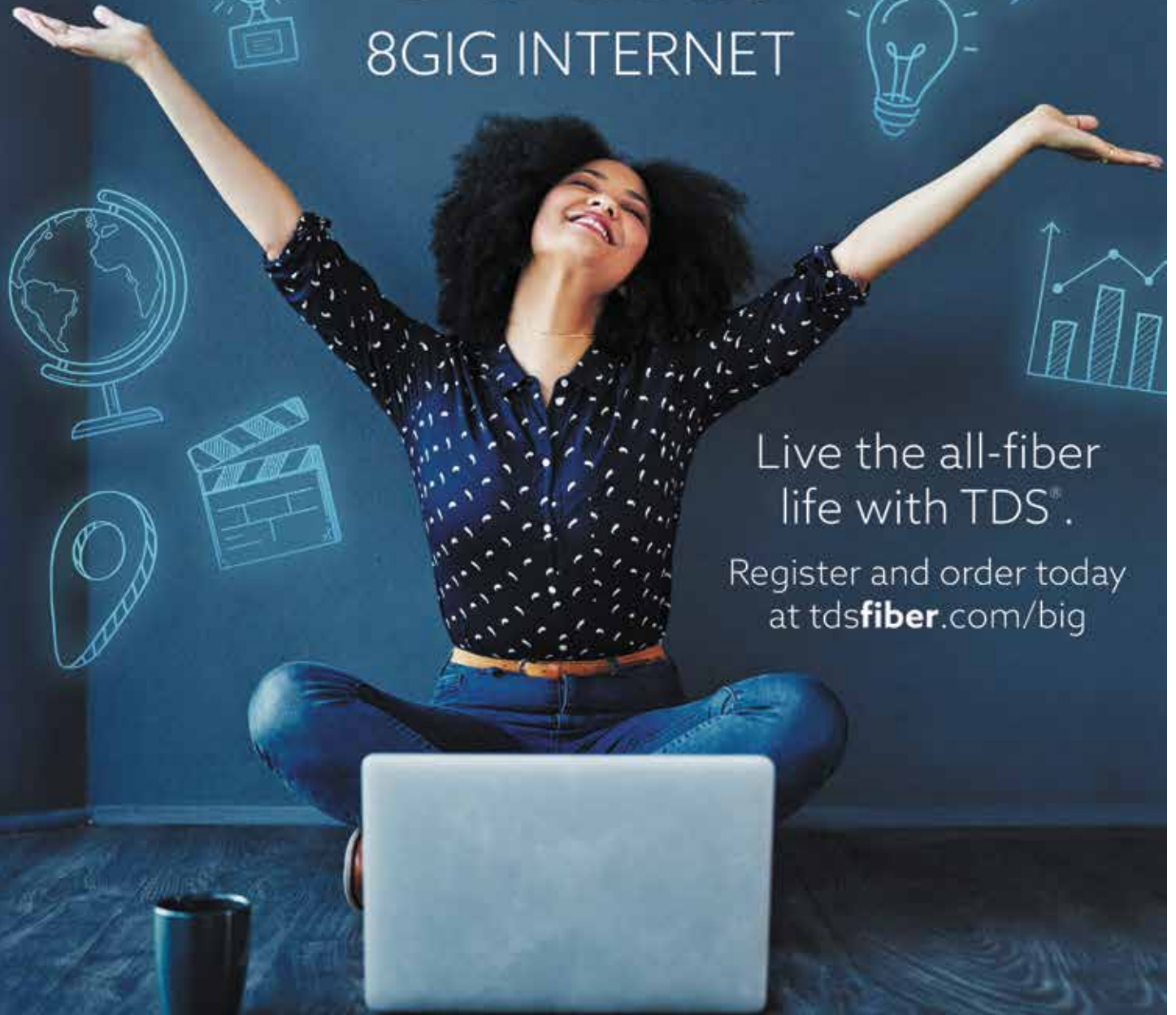
10 BAN CONSTRUCTION 1335 Medinah Pl.	
	BRANDING IRON CONSTRUCTION 2023 Slate Rd. 14
18 CB BUILT 1338 Scheffler Way	
	GOLD BUCKLE HOMES 6311 Fresh Water Ln. 22
26 MCCALL HOMES 1804 St. Paul Ln.	
	PINE RIDGE BUILDERS 2503 Hunter Hall St. 30
38 TRUE NORTH HOMES 47 Black Canyon Ct.	
	WELLS BUILT HOMES 4694 Pine Cove Rd. 44
48 DB CARPENTRY 3006 Baneberry Ave. RED LODGE	
	TRAILHEAD BUILDERS 3007 Bluebell Ave. RED LODGE 52
56 ZACH BESEL CONSTRUCTION 313 S. Grant Ave. RED LODGE	





THINK BIG. DO BIG.

8GIG INTERNET



Live the all-fiber
life with TDS®.

Register and order today
at tdsfiber.com/big



From the President

It is my pleasure to welcome you to the 35th Anniversary of the Parade of Homes, brought to you by the Home Builders Association of Billings!

All of our Parade Home Builders, as well as the businesses, subs and suppliers listed in this magazine are members of the Home Builders Association of Billings. HBA members strive to maintain the highest standards in all aspects of their business and support the mission of the HBA - to provide attainable high-quality homes in our communities.

Just as the craftsmen and trade professionals make this event worth attending, it simply would not exist without all the hard work and dedication of the HBA staff, Parade Volunteer Task Force, Sponsors, Vendors, and Suppliers.

I would like to personally thank everyone involved for helping make our 35th Anniversary Parade Tour spectacular! A special thank you to our event Sponsors: Billings Insulation, Coldwell Banker the Brokers, Stockman Bank, TDS Fiber, and Yellowstone Valley Electric Co-op.

We thank you for being part of the Parade of Homes' 35th Anniversary and are certain you will enjoy your tour!

Chad Wagenhals,
HBA President
CDW Construction



From the Executive Officer

It is our pleasure to present the 35th Anniversary of the Parade of Homes! This year's event presents several homes in Red Lodge, along with some of the most spectacular homes in Billings, all constructed by some of the Billings Home Builders Association's most talented members.

The Billings HBA is comprised of over 400 residential construction industry members who are committed to maintaining the highest level of professionalism within the industry. Before you build, buy, remodel, or redesign, we encourage you to utilize the HBA as a resource to find the professional you need for your project.

I would like to thank all of our 2025 Parade of Homes builders, subcontractors, suppliers, sponsors, volunteers, and staff for their participation and long diligent hours preparing for our 35th Anniversary Parade Tour.

Don't forget to deposit your completed ticket at the end of your tour, indicating your votes, and for the chance to win the Family Outdoor Recreation Prize Package! This year's Grand Prize includes his & hers adult mountain bikes, two youth bikes, a Blackstone grill with lid & stand, and lots of backyard games to play with the family. Special thanks to Yellowstone Valley Electric Co-op and Border States Electric for this year's Grand Prize!

Thank you for attending the 2025 Parade of Homes' 35th Anniversary Tour. We hope you are as excited to take the tour as we are to present it to you.

Kimberly Welzenbach,
Executive Officer

The Home Builders Association of Billings

SAY HOME SWEET HOME WITH A SWEET HOME LOAN!

From the Beartooth Mountains to the banks of the Yellowstone River, we live and work in the communities we serve. Put our knowledge of the local market to work for you.



Financing your family's future.

GET STARTED TODAY AT WESTERNSECURITYBANK.COM



WESTERN SECURITY
BANK



Home
begins here.

CARPET • HARDWOOD
LAMINATE • CERAMIC TILES
WINDOWS 'N BLINDS
AREA RUGS • SHUTTERS
LUXURY VINYL TILE & PLANK

CARPET ONE FLOOR & HOME®

505 S. 24th St. W | 406.656.9300 | carpetone.com

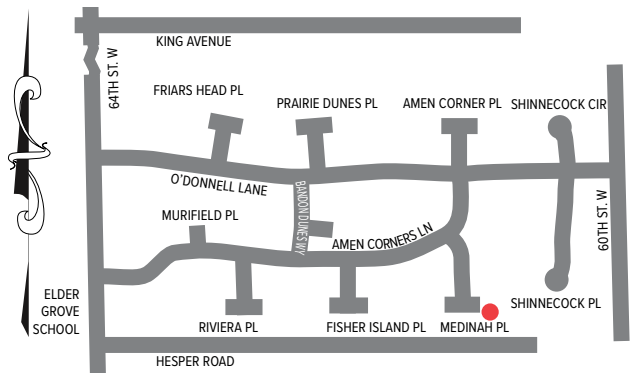
Photos for illustrative purposes only. ©2023 Carpet One Floor & Home. All Rights Reserved

Mon.-Fri. 9:00 - 6:00
Sat. 9:00-5:00
Sun. CLOSED

BAN

Ban Construction

1335 Medinah Pl.



Ban Construction homes never disappoint. They are the homes people yearn to see when they visit the Parade of Homes.

Before you enter through the front door, stop and take the time to look around. The finishing touches are a signature of Brian and Tana Ban. After the magnificent beams were set, this amazing couple took the time to add detailed trim work *between* the beams. When you go inside take notice of the delicate pinstripe accent between the walls and ceilings. It is subtle touches such as these that provide insight to this build team's vision.

Step into the home and soak up the expansive, yet gracious spaces. A contemporary chandelier swirls over the dining room table leading your eye upward to the striking beams, which define the space.

The color palette is comprised of tonal warm grays and soft blacks. The height of the ceilings and the large windows provide ample light, so the spaces read as extremely cozy.

The great room is the only room in the home with 12-foot ceilings; the remainder have 10-foot ceilings. One can imagine curling up with a favorite beverage and enjoying the fireplace, watching television or reading a good book.

The kitchen boasts a magnificent granite composite island with set-in black sink. The lighting in the kick space beneath the cabinets is a wonderful accent and is a trend in newer homes and adds to the ambiance. Of course there is a hidden pantry; but wait, there is a *second* pantry for additional storage. You can't help but notice the large

fridge/freezer; but you will have to hunt for the coffee maker. It is in a cabinet stowed beneath a lift-up door.

There is an office, two additional bedrooms, and a bathroom beyond the great room. This is a perfect space for the brains of the outfit to create her crafty touches.

The suite wing of the home includes the laundry/mud room, a powder room and a corridor that leads to the primary suite. The primary suite is calm and quieting. The high ceilings and fan set the scene for a great night's rest.

This home was designed for aging gracefully. The doors are all wide enough to accommodate adaptive devices should the need arise. The showers are all zero entry. The only step is in the "garage" between the main garage and the golf simulator. Certainly, no garage would be complete without an indoor barbecue with hood and full wet bar.

The covered patio is a great space. During the day, it never gets full sun even with a southern and eastern exposure, so it is a good place to just hang out. There is a ceiling fan to move air; and an outdoor grilling station with a raised bar/ island. The landscaping is impeccable.

Take your time to really explore this home in The Nines. It is truly a work of art.

Interior Features & Finishes

- Flooring - LVP
- Cabinets - Stained White Oak
- Countertops - Black and White Composite Granite
- Sinks/Faucets - Composite Sink with Black Faucets
- Appliances - JennAire Stainless Steel
- Lights - Recessed Cans
- Built-in - Coffee Nook

Primary Suite

- Walls - Hand Textured, Benjamin Moore Briarwood
- Flooring - Shaw, Summerhouse
- Ceiling - White Hand Textured
- Fixtures - Ceiling Fan
- Closet - Walk-in with Large Island
- Bathroom Flooring - Brown and Cream Tile
- Cabinets - Alder Floating
- Sinks - White Under-mount

Additional Bedrooms and Bathrooms\

- Wall Color - Swordian Gray, Briarwood
- Lighting - Recessed Cans

Unique Built-Ins

- Office Shelving
- Wet Bar
- Fireplace
- Whole House Stereo
- Golf Simulator
- Indoor Barbecue Grill with Vent Hood

Exterior & Landscaping

- Dakota Common Brick
- Timber Bark Lap Siding
- Additional Siding - Seal Skin
- Outdoor Kitchen

Bedrooms: 3

Number of Bathrooms: 3.5

Total Square Footage: 6,329

Main Floor Square Footage: 3,378

Garage Square Footage: 1,867

Storage Square Footage: 1,084

CELEBRATING THE RICH TRADITION OF LOG HOMES

During the pandemic, many home buyers and homeowners spent time reimagining their living space. If you started dreaming about buying and building a log or timber home, you are not alone. More people live in these modern, rustic residences than in any time in history. The warmth of wood, the solid construction and that powerful connection to nature, all add up to a feeling of safety and sanctuary that many of us crave in today's uncertain world.

There are several reasons why log homes are attractive for today's home buyer. Modern log and timber homes can easily meet or exceed the performance of conventional construction. Log homes have a faster construction time and lower labor costs when compared to conventional construction. And, today's modern log and timber homes do not require any more maintenance than conventional homes.

Finding the right building professional to turn your dream of log and timber home living into a reality takes time and research. The Log and Timber Homes Council (LTHC) of the National Association of Home Builders is a great place to start. The council has adopted membership requirements that protect consumers during the buying and building process. All LTHC members follow specific standards and a uniform code of ethics, and each member stays abreast of new technology with the end goal of ensuring customer satisfaction and a quality product.

LTHC members celebrate log homes during National Log Homes Month in July, through online education sessions, virtual tours and in-person events. This is a great opportunity to see first-hand all of the benefits of log homes and if log home living is right for you.

One Lucky Guest Will WIN!

Deposit your completed ticket in the drawing box the end of your tour for your chance to WIN!



Family Outdoor Recreation Package

Don't Forget to Vote for Best Home on Parade!

BILLINGS, MT
PARADE of HOMES

www.billingsprecast.com



Providing end-to-end services for residential and commercial septic systems.



Own Your Dream Home!

Your life is missing something. It's not love. It's not money. It's a charmingly fragrant, personal sewage processing facility humming gently outside your bedroom window. Bet you never dreamt about that!



BRANDING IRON

Branding Iron Construction

2023 Slate Rd.



This wonderful home by Branding Iron Construction has tremendous curb appeal. As you approach, you see the contrast between the soft green siding, black doors, and natural wood trim. It gives you an inkling of what you will see inside.

The front door is a substantial 4 1/2 foot pivot door with large glass windows. The great room is very calming. The hand-textured walls give a relaxed feel. At one end is the fireplace with stone surround, which is softened by a light wood mantle and wood shiplap on the remainder of the wall. The other end is the kitchen with a soft green island with a white counter that includes an eating bar. A black, undermount sink stands in contrast to the white counter, that is softened by the yummy green tile backsplash set in a herringbone pattern. The dining room has a chandelier that reminds you of melting ice. Notice the little pet door? There are sliding doors to a covered patio with finished soffit.

An office toward the front of the home is closed off with barn doors.

The walk-through pantry is behind the kitchen. It is a perfect place to stage food for a dinner party or any gathering for that matter. It would allow one to entertain without the mess in the kitchen. The pantry shelves are enclosed with barn doors.

Behind the fireplace are 2 bedrooms with a Jack 'n' Jill bath. Each bedroom has a nicely sized walk-in closet. The double vanity is convenient, and the tub and commode are behind closed doors.

The primary suite is behind the kitchen. There is a private door to the back patio. The bathroom has a newer concept wet room that contains the shower as well as the tub. All set on green tile with

Kitchen & Dining Area

- Flooring - Lyrus Elite LVP, Mammoth
- Cabinets - Shaker style, Pure White & Evergreen Fog
- Countertops - Quartz Calacatta Verde & Cotton White
- Sinks/Faucets - Moen Black Faucets, Black Double Bowl Sink
- Appliances - Z-Line, Stainless Steel
- Lighting - Recessed Lighting, Quoizel Fixtures
- Pantry - Butler's Pantry
- Windows & Doors - Milgard, Black Fiberglass

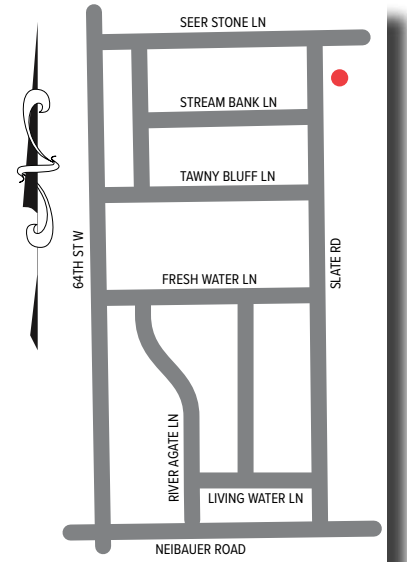
- Ceiling - Pure White
- Lighting - Mina Aire Fan, Quoizel Fixtures
- Closet - Cabinets with Custom Built-in Vanity
- Bath Flooring - Lyrus Elite LVP, Mammoth
- Bath Cabinets - Shaker Style, Pure White
- Bath Sinks Fixtures - Moen, Black
- Tub - Free Standing Soaking Tub, White
- Shower - Avalon Verde and White Subway Tiles, Moen Dual Showerheads

Additional Bedrooms & Features

- Closets - Walk-in
- Wall Colors - Pure White
- Lighting - Minka Aire Fans, Quoizel Fixtures
- Fireplace

Primary Suite

- Walls - Pure White, Hand-Textured
- Flooring - Lyrus Elite LVP, Mammoth
- Windows - Milgard, Black Fiberglass
- Walls - Pure White, Hand-Textured



geometric black design. The bath includes a great vanity with electronic mirror. There is no shortage of storage space in this bathroom! The walk-in closet is also very generous. There are specially designed places to put shoes. It is evident that a lot of thought went into how a closet should function. Nicely done!

The laundry is accessible through the primary suite closet. There is a farmhouse apron sink set into white countertops. The green walls contrast nicely with white subway tiles.

In addition to the two-car garage, there is a massive RV garage. No RV, no problem, use this space for a workshop or add a hoop for a quick game of basketball. Lots of uses for this great space!

The home has an on-demand hot water heater and a reverse osmosis water system. Fresh water will never be an issue! For the engineers out there, the home is equipped with a modulating HVAC system, which adjusts its output continuously to maintain precise heating and cooling. Constant temperature in a house? Yes, please!

Please take your time walking through this exceptional home.

Exterior & Landscaping

- Garage Details - Fully Finished, Insulated, Heated & Cooled, Epoxy Floors
- Exterior Finished - Hardie Board in Sage, Vinyl Fencing
- Other features - Water Feature

Bedrooms: 3

Number of Bathrooms: 2.5

Total Square Footage: 2,464

Main Floor Square Footage: 2,464

At Branding Iron Construction, we believe building a home means more than just bricks and beams — it is about building dreams and forging lasting relationships. Since 1997, we've grown from a small family venture into a trusted name in home construction, rooted in craftsmanship, creativity, and an unwavering commitment to our clients.



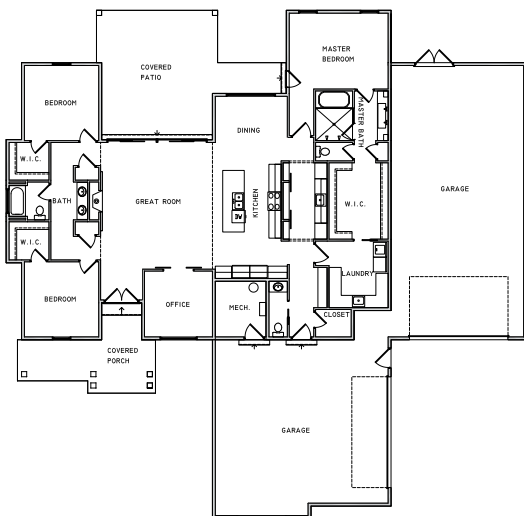
Behind every project is our dedicated team of experienced trade contractors, suppliers, and industry professionals — all driven by a shared passion for excellence. We prioritize quality craftsmanship and meticulous attention to detail in every home we build, treating each project as an opportunity to craft a space where memories will be made and lives will unfold.

We invite you to become part of the Branding Iron Construction family. Let us help bring your vision to life with a home that reflects who you are — built with integrity, care, and a commitment to excellence.

Jarrett, Karen, & Tanner Smith
 Branding Iron Construction, LLC

www.brandingironconstruction.com

Find us on Facebook!



HBA MEMBER SUPPLIERS AND SUB-CONTRACTORS

- Appliances** Fred's Appliance
 Home Yellowstone
- Architect Plan Design** Impact Drafting, Inc
- Bank /Lending** Yellowstone Bank
- Cabinets** Big Sky Wood Products, LLC
- Carpentry/Framing** Benchmark Window & Door, Inc.
 Mead Lumber
- Concrete Flatwork** Knife River
- Concrete Foundation** FKF Construction, Inc.
 Knife River
- Countertops** Stone Wild Quartz & Granite
- Custom Closet** Big Sky Wood Products, LLC
- Doors - Exterior** Benchmark Window & Door, Inc.
- Doors - Interior** Mead Lumber
- Excavation** KE Construction, Inc.
 Knife River
- Fasteners** Benchmark Window & Door, Inc.
 Mead Lumber
- Fireplace** Fireplace Center, Inc.
- Flooring** Home Yellowstone
- Insulation** Billings Insulation Services
- Interior Design/Décor** Branding Iron Construction, LLC
- Lighting Fixtures** One Source Lighting
- Masonry** Pacific Supply
- Paint** Sherwin Williams
- Plumbing** The Water Closet
- Siding/EIFS** Mead Lumer
- Soffit/Fascia** Dustin Davison Construction, LLC
- Title Company** Chicago Title Company
- Trusses** Benchmark Window & Door, Inc.
- Windows** Benchmark Window & Door, Inc.
- Water Softener** Culligan Water

BOARD OF DIRECTORS

EXECUTIVE OFFICERS

PRESIDENT

Chad Wagenhals—CDW Construction

1ST VICE PRESIDENT

Scot Bonenberger—BRS Construction

2nd VICE PRESIDENT

Conner Bokma—CB Built

IMMEDIATE PAST PRESIDENT

Rich Naylor—MHS Construction

TREASURER

Wayne Nelson, Stockman Bank

BUILDER DIRECTORS

Joe Bonini - Bonini Construction

Calvin Fry - Langlas & Associates

Jake Nienaber - ZuHaus Construction

Levi Wanner - Infinity Homes

Doug Wild - Classic Design Homes

ASSOCIATE DIRECTORS

Cody Kisling - Benchmark Window & Door

Shay Picard - Kitchens Plus

Jennifer Saylor - Yellowstone Valley Electric Co-Op

Jeff Scherr - Comfort Heating & AC

Lona Warrenburg - Stewart Title

LOCAL ISSUES DIRECTOR

Joe Bonini - Bonini Construction

Doug Wild - Classic Design Homes

MBIA DIRECTORS

Scot Bonenberger - BRS Construction

Kolten Knatterud - IMEG

Jarrett Smith - Branding Iron Construction

Mike Vinton - Vinton Construction

Chad Wagenhals - CDW Construction

Garrett Wagner - Opportunity Bank

NAHB DELIGATES

Ken Callahan - Montana-Dakota Utilities

Beau Thompson - Thompson Homes

HBA STAFF

Kimberly Welzenbach - Executive Officer

Brittany Reule - Member Services Representative

Elizabeth Shumaker - Government Affairs Officer



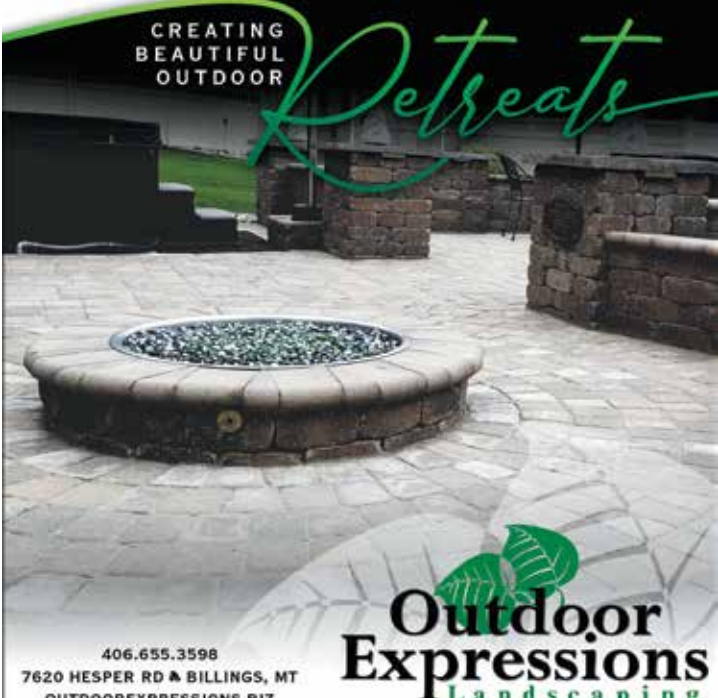
FIRST MONTANA TITLE

KEEPING IT LOCAL

DOWNTOWN
2737 Montana Ave, Billings, MT 59101
406.248.3000, FAX 406. 248.9928

WEST END
2800 Central Ave, Unit B, Billings, MT 59102
406.869.9669, FAX 406.294.1985

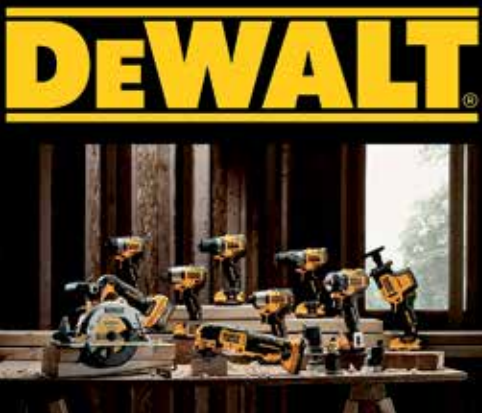
RED LODGE
515 Broadway Ave N, Unit #2, Red Lodge, MT 59068
Phone: 406-445-4026, FAX 406-248-9928



CREATING BEAUTIFUL OUTDOOR *Retreats*

Outdoor Expressions Landscaping

406.655.3598
7620 HESPER RD & BILLINGS, MT
OUTDOOREXPRESSIONS.BIZ



DEWALT



A&H SPECIALTIES

468 Moore Ln
Billings, MT 59101

ahturf.com



Makita